

INSTRUCTIONS FOR STUDENTS

General Instructions

- Students needs to come 45 minutes before exam starts
- Paper will be cancelled if any anyone found cheating
- Mobile phones are not allowed inside the examination room

Multiple Choice Papers

- There are total 100 MCQs in the written paper
- Total time for the written paper is **Three hours**
- No candidate shall be allowed to leave the examination hall/room before 45 minutes

Instructions for filling the OMR sheet

- Write your Roll numbers in the space provided on the OMR sheet with a ball pen
- Fill the respective number bubbles clearly with a pencil in the section marked for Roll Number
- Each question has four alternative responses marked A, B, C and D. The candidate has to darken the correct response against each question.
- There is no need to mark the answer in the MCQ paper as it will not be assessed.
- Each correct answer carries one mark.
- No marks will be given if the bubble is not filled completely or lightly, more than one bubble is shaded or if all bubbles are left blank
- If you want to change the answer to a question please erase the bubble completely
- Marks will **not** be deducted for wrong answers so try to attempt all questions
- Before handing over the original OMR Sheet to the Invigilator, the candidate must put his signature within the space provided.

DO NOT FOLD OR DAMAGE THE OMR SHEET IN ANY WAY AND DO NOT DAMAGE ANY

PART OF THE SHEET TO ENSURE EVALUATION, OTHERWISE THE OMR SHEET WILL NOT BE EVALUATED.



How to fill your Roll Number

- Roll number contains of **TEN(10)** digits
- The first four digits are for the **YEAR**
- The next two digits are **PROGRAM CODE**
- Last four Digits are **ROLL NUMBER**

Roll NO									
2	0	1	4	0	1	0	3	2	4
○	●	○	○	●	○	○	○	○	○
○	○	●	○	○	○	○	○	○	○
○	○	○	○	○	○	○	○	○	○
○	○	○	○	○	○	○	○	○	○
○	○	○	○	○	○	○	○	○	○
○	○	○	○	○	○	○	○	○	○
○	○	○	○	○	○	○	○	○	○
○	○	○	○	○	○	○	○	○	○
○	○	○	○	○	○	○	○	○	○
○	○	○	○	○	○	○	○	○	○
○	○	○	○	○	○	○	○	○	○
○	○	○	○	○	○	○	○	○	○
○	○	○	○	○	○	○	○	○	○

Filling/Marking the OMR Sheet

For example: A B C D, where B is the correct response.

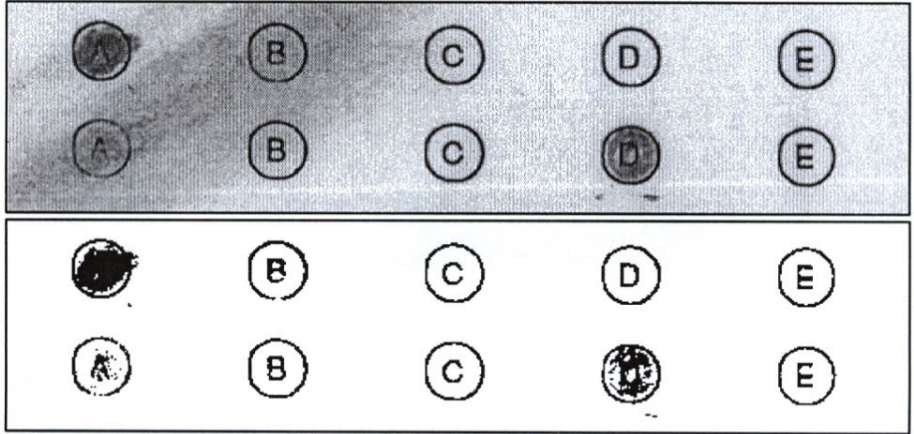
Correct filling /darkening of OMR

○	●	○	○	○
---	---	---	---	---

Incorrect filling/darkening of circle

○	○	○	○	○
---	---	---	---	---





Computer will **NOT** read the response if you filled the OMR sheet **incorrectly**

